

PROJECT 項目名稱:	DRAWING TITLE 圖目:	REMARKS 備註:
Temporary Animal Boarding Establishment (Cattery) and Associated Filling of Land for a Period of 3 Years at Lots 4 (Part), 5 S.AP & 5 S.BA in D.D.110, Tai Kong Po, Kam Tin, Yuen Long, N.T	Existing Drainage Plan	<input type="checkbox"/> Proposed catchpit *16.4 Level (in mPD) IL Invert level
	DRAWING No. 圖號: DS-1	SCALE 比例: 1:500

Photos Record for Existing Drainage System



Photo (1)



Photo (2)

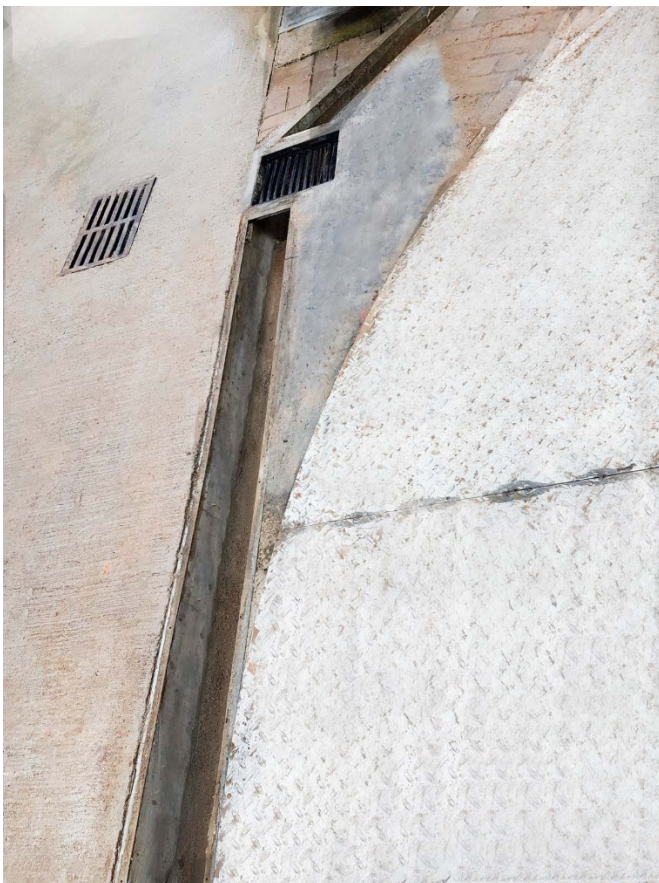


Photo (3)

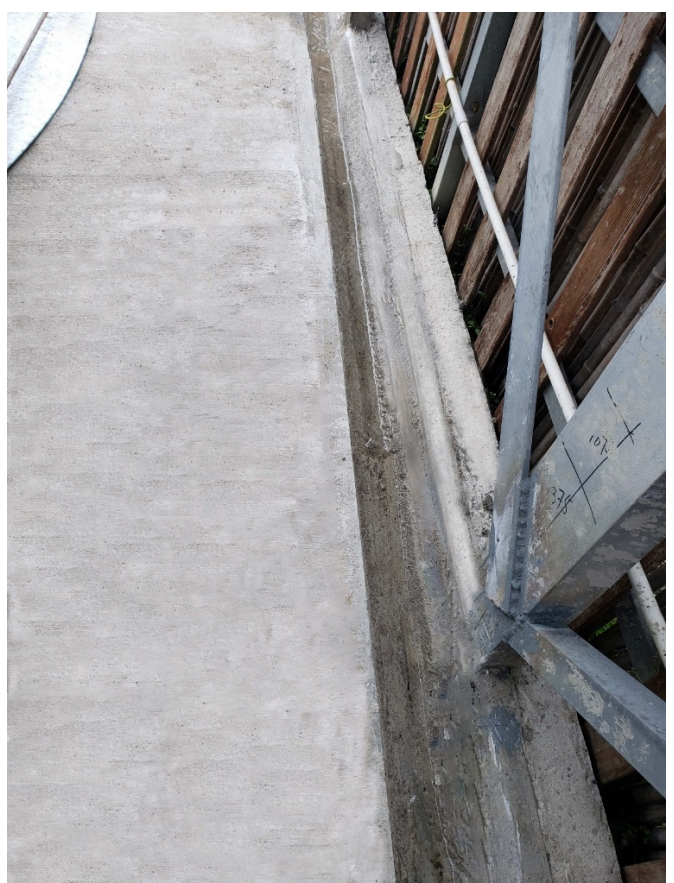
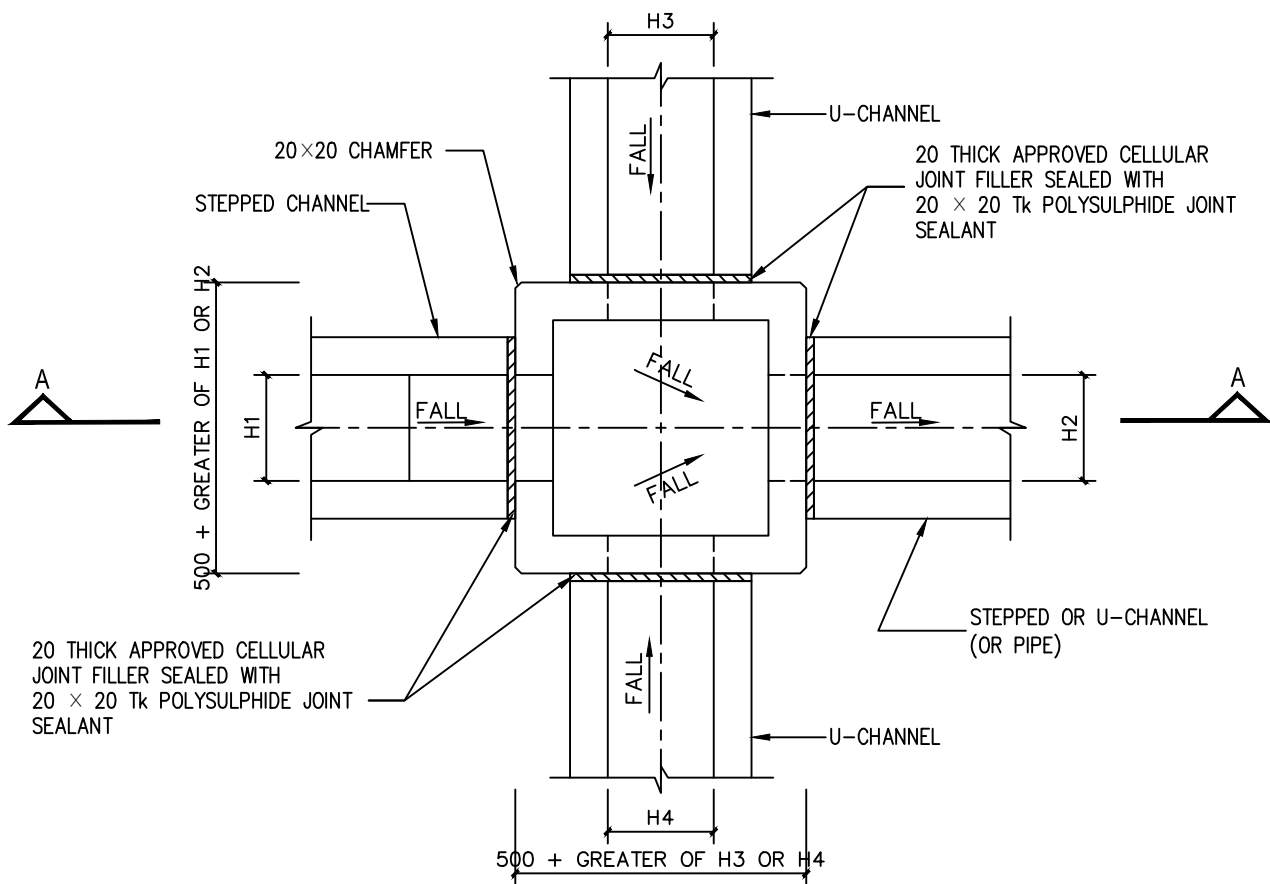


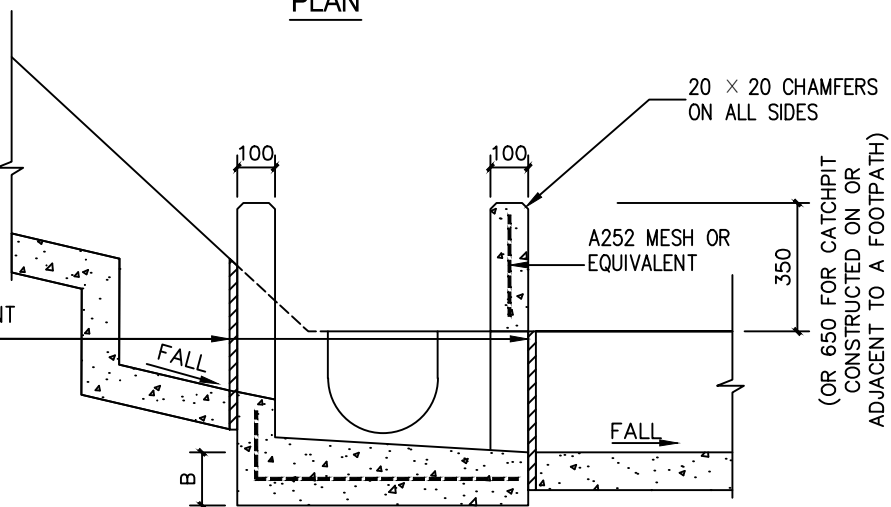
Photo (4)



PLAN

NOMINAL SIZE (LARGEST OF H1, H2, H3 & H4)	B
300 - 600	150
675 - 900	175

20 THICK APPROVED CELLULAR JOINT FILLER SEALED WITH 20 x 20 Tk POLYSULPHIDE JOINT SEALANT



SECTION A - A

NOTES:

1. ALL DIMENSION ARE IN MILLIMETRES.

PROJECT 項目名稱:

Temporary Animal Boarding Establishment (Cattery) and Associated Filling of Land for a Period of 3 Years at Lots 4 (Part), 5 S.AP & 5 S.BA in D.D.110, Tai Kong Po, Kam Tin, Yuen Long, N.T

DRAWING TITLE 圖目:

Details of The Catchpit

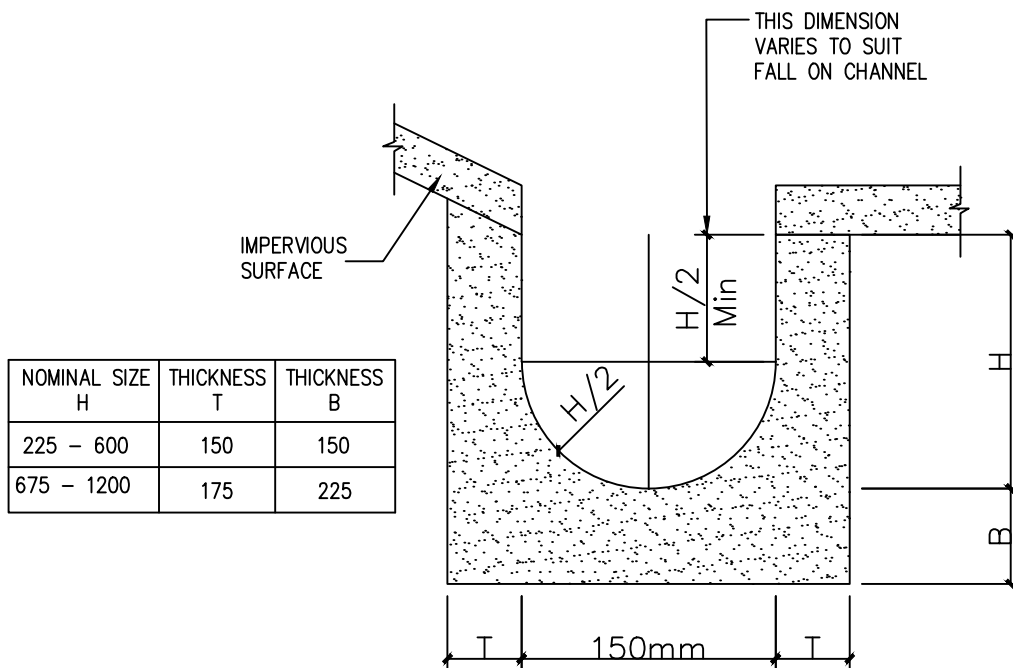
REMARKS 備註:

DRAWING No. 圖號:

DS-4

SCALE 比例:

Not to scale



DETAILS OF U-CHANNEL
 (REFERENCE : FIG. 8.11 OF
 GEOTECHNICAL MANUAL FOR SLOPES)
 (N.T.S)

PROJECT 項目名稱:

Temporary Animal Boarding Establishment (Cattery) and Associated Filling of Land for a Period of 3 Years at Lots 4 (Part), 5 S.AP & 5 S.BA in D.D.110, Tai Kong Po, Kam Tin, Yuen Long, N.T

DRAWING TITLE 圖目:

Details of Surface U - channel

REMARKS 備註:

DRAWING No. 圖號:

DS-3

SCALE 比例:

Not to scale